

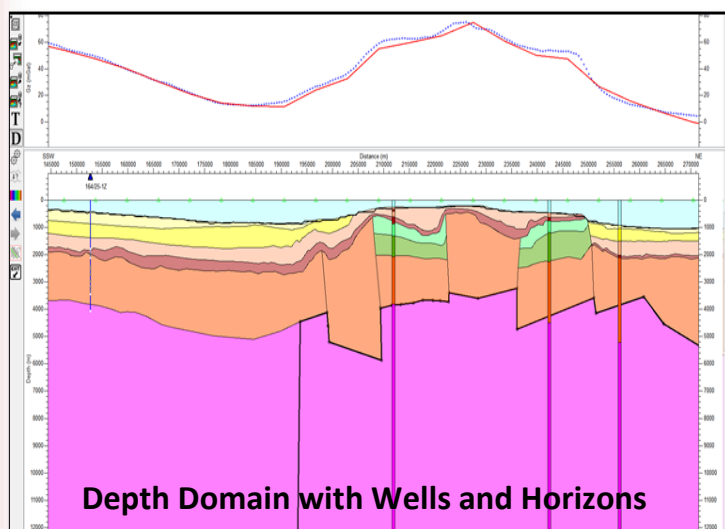
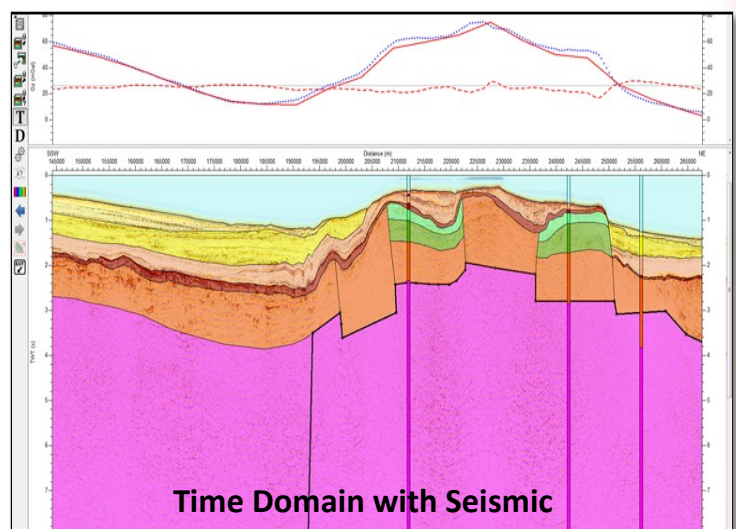


*Integrated potential field modelling software built from
the seismic interpreter's perspective*

ARK CLS XField is a powerful geophysical modelling tool that enables explorationists to analyse and seamlessly integrate potential field data alongside available seismic, well and horizon data. Geological models can be generated with more accuracy and confidence than previously possible, reducing exploration uncertainty, risk and cost.

MAIN BENEFITS:

- X** Model in time or depth domains, with real time conversion & calculation of potential field responses
- X** Create robust and better constrained geological models
- X** Integrate Seismic, Well Log, Horizon & potential field data all in one package
- X** Obtain maximum value from your potential field data



- X** Intuitive and easy to use interface
- X** Output model bodies and horizons in either time or depth
- X** Change filtering parameters of observed & modelled data in real time to investigate depth of sources
- X** Available as a plug-in for Petrel* and Opendtect

FOR MORE INFORMATION CONTACT US ON +44 1234 834864



* is a mark of Schlumberger

XField is owned by AGL (Arkex Geophysics Ltd)

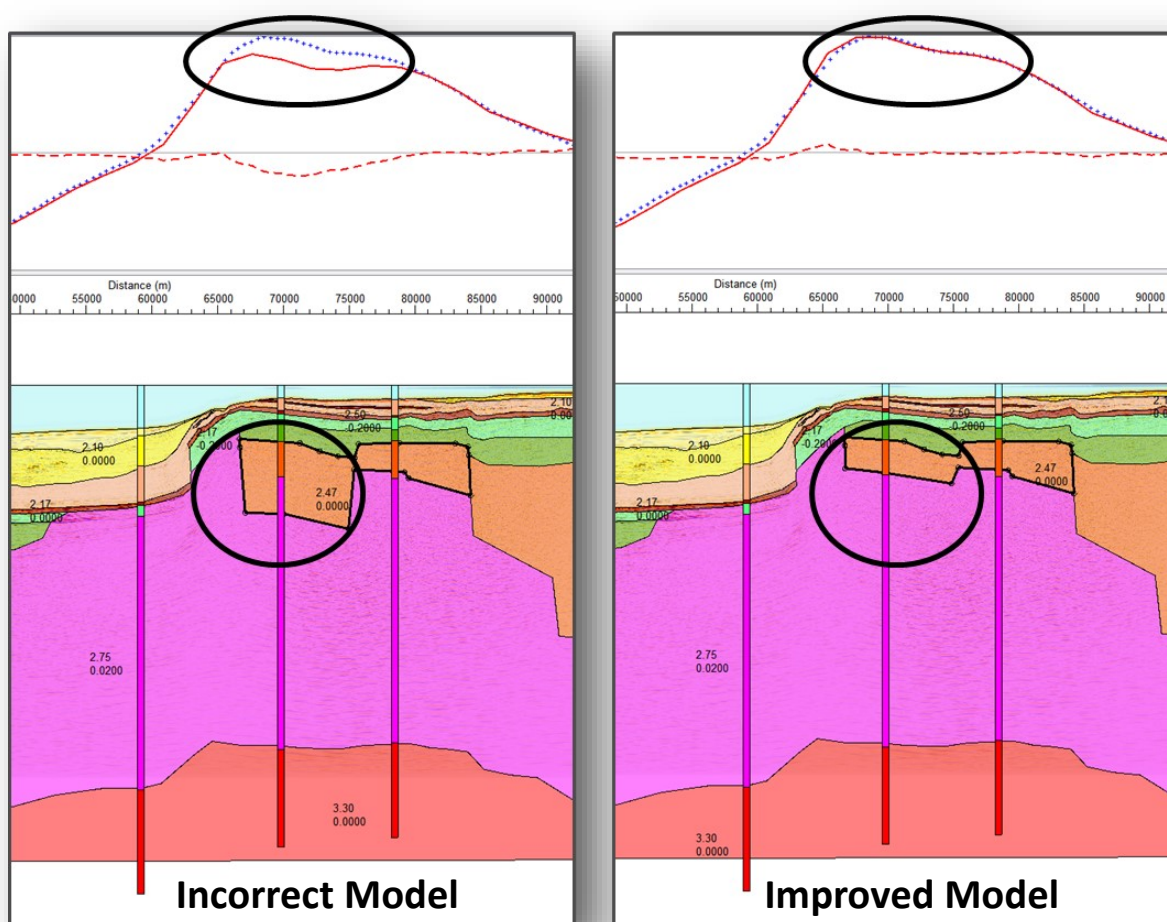
ARK CLS Ltd acknowledges trademarks and registered trademarks of their respective owners

ARK CLS Ltd, Bedford i-Lab, Priory Business Park, Stannard Way, Bedford, MK44 3RZ, UK.

Tel: +44 1234 834864 Fax: +44 1234 834865 E-mail: info@arkcls.com Web: www.arkcls.com

Why use **X_{FIELD}**

- X_{FIELD}** The way in which a model relates to observed potential field data is often not intuitive to a non-specialist interpreter.
- X_{FIELD}** XField makes the process of changing a model so it is consistent with observed gravity and magnetic data simple—any change to the model produces a real time change in the calculated potential field.
- X_{FIELD}** This means an interpreter can experiment to try and reduce the misfit (red dashed line), between the expected field data from their model (red line) and the real field data that has been collected (blue dotted line).



“XField is clearly designed from the users perspective and is a one stop modelling package that does all the things I’m ever likely to need. The whole package is easy to use and I think it’s the best 2D/2.5D modelling package on the market.”

Andy McGrandle, *Big Anomaly*

FOR MORE INFORMATION CONTACT US ON +44 1234 834864

* is a mark of Schlumberger

XField is owned by AGL (Arkex Geophysics Ltd)

ARK CLS Ltd acknowledges trademarks and registered trademarks of their respective owners



ARK CLS Ltd, Bedford i-Lab, Priory Business Park, Stannard Way, Bedford, MK44 3RZ, UK.

Tel: +44 1234 834864 Fax: +44 1234 834865 E-mail: info@arkcls.com Web: www.arkcls.com