

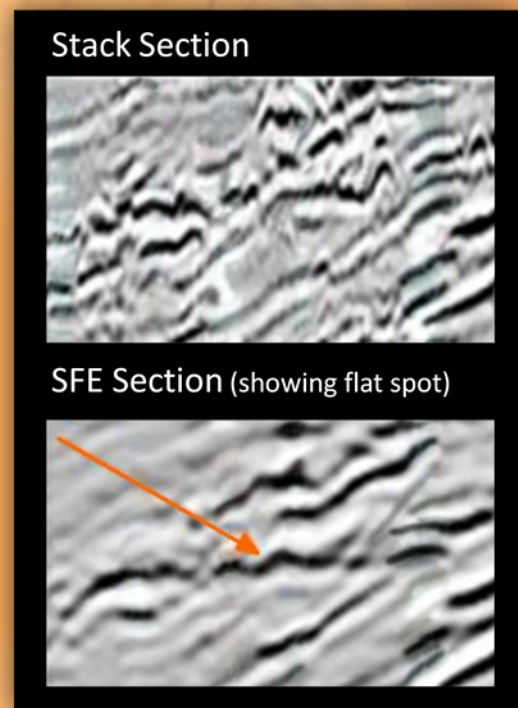
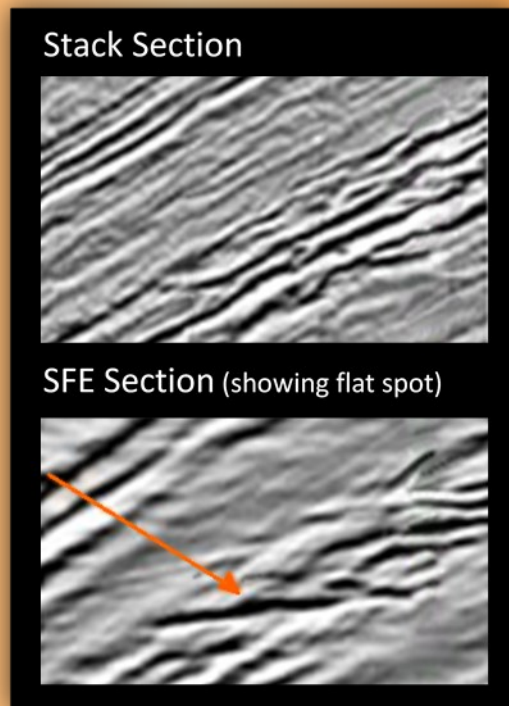
Seismic Feature Enhancement

A powerful flat-spot utility that enhances the signal of consistent flat events and reduces the 'noise' of channel reflections

ARK CLS Seismic Feature Enhancement (SFE) provides a very powerful technique that boosts flat-spots from your seismic data during the interpretation stage. This Direct Hydrocarbon Indicator (DHI) is routinely used to reduce the probability of drilling dry holes.

MAIN BENEFITS:

- ◆◆ Reduces time and cost to identify a reservoir
- ◆◆ Enhances the resolution of fluid contact reflections (DHI)
- ◆◆ Enables flat spots to be recognised sooner
- ◆◆ Superior to optical stacking



- ◆◆ Seamlessly integrated with existing major seismic interpretation systems
- ◆◆ Fast, robust, inexpensive, easy to use
- ◆◆ Available as a plug-in for Petrel*, Opendtect and other Windows and Linux platforms

FOR MORE INFORMATION CONTACT US ON +44 1234 834864

* is a mark of Schlumberger

ARK CLS Ltd acknowledges trademarks and registered trademarks of their respective owners



ARK CLS Ltd, Bedford i-lab, Priory Business Park, Stannard Way, Bedford, MK44 3RZ, UK.

Tel: +44 1234 834864 Fax: +44 1234 834865 E-mail: info@arkcls.com Web: www.arkcls.com