

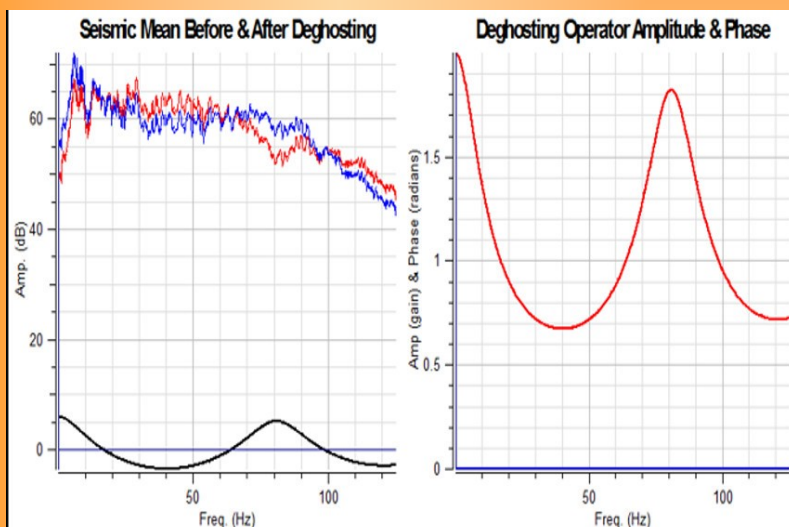
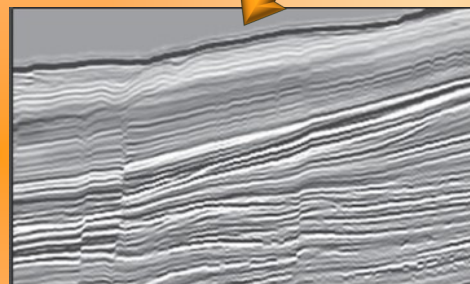
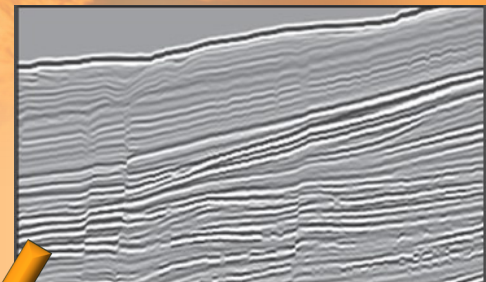
PostDeGhost

Removes the ghost arrival from post-stack data

ARK CLS PostDeGhost is ideal for improving legacy seismic and to match broadband data quality by removing the source and receiver ghost from post stack data. This allows the user to account fully for notch diversity, phase correction and amplitude of the notch in their operator design.

MAIN BENEFITS:

- ◆ Capable of producing comparable results to broadband acquired data
- ◆ Seismic resolution can be greatly improved
- ◆ Works entirely in the post-stack domain so can be used to improve legacy seismic where pre-stack data might not be available



- ◆ Useful to estimate the potential impact of a whole pre-stack re-processing project before making such a huge investment
- ◆ Available as a plug-in for Petrel* and OpendTect

FOR MORE INFORMATION CONTACT US ON +44 1234 834864

* is a mark of Schlumberger

ARK CLS Ltd acknowledges trademarks and registered trademarks of their respective owners



ARK CLS Ltd, Bedford i-lab, Priory Business Park, Stannard Way, Bedford, MK44 3RZ, UK.

Tel: +44 1234 834864 Fax: +44 1234 834865 E-mail: info@arkcls.com Web: www.arkcls.com