

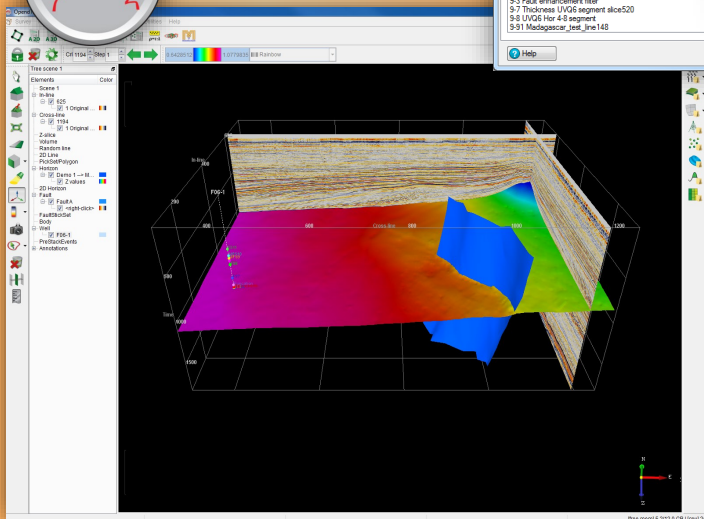
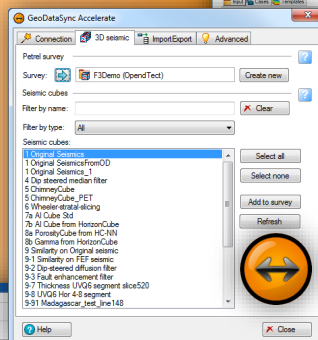
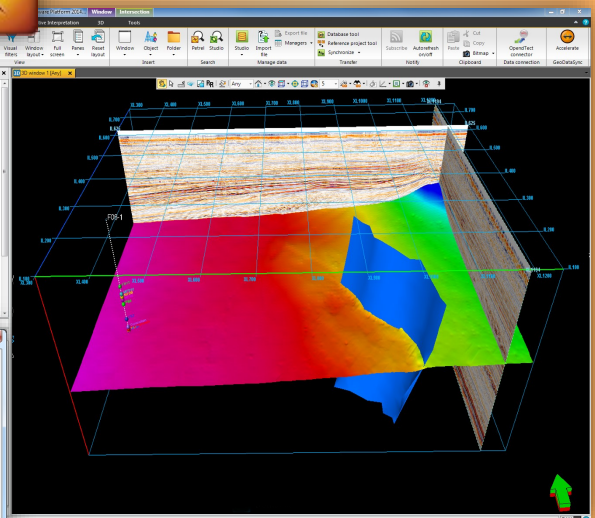
GeoDataSync® Accelerate

Allows users to share data between Petrel and OpendText*

ARK CLS GeoDataSync Accelerate is an OpendText data access plug-in for Petrel which allows users to access 3D seismic data volumes stored in an OpendText survey without copying. Once the connection has been established and the data selected, it can be used in visualisation or in any Petrel workflow. The connection to OpendText is automatically re-established whenever the Petrel project is re-opened, allowing the remote data to be accessed again.

MAIN BENEFITS:

- ◆ Avoids 3D seismic data duplication
- ◆ Import and export of 2D & 3D Seismic, 3D Horizons, Faults, Polygons, Wells and Wavelets
- ◆ Maintains data integrity



- ◆ Solves the inherent complexity issues when copying interpretation data
- ◆ Facilitates efficient workflow effort between different interpretation systems
- ◆ Easy to install, easy to use
- ◆ Available as a plug-in for Petrel

FOR MORE INFORMATION CONTACT US ON +44 1234 834864



* is a mark of Schlumberger

ARK CLS Ltd acknowledges trademarks and registered trademarks of their respective owners

ARK CLS Ltd, Bedford i-lab, Priory Business Park, Stannard Way, Bedford, MK44 3RZ, UK.

Tel: +44 1234 834864 Fax: +44 1234 834865 E-mail: info@arkcls.com Web: www.arkcls.com